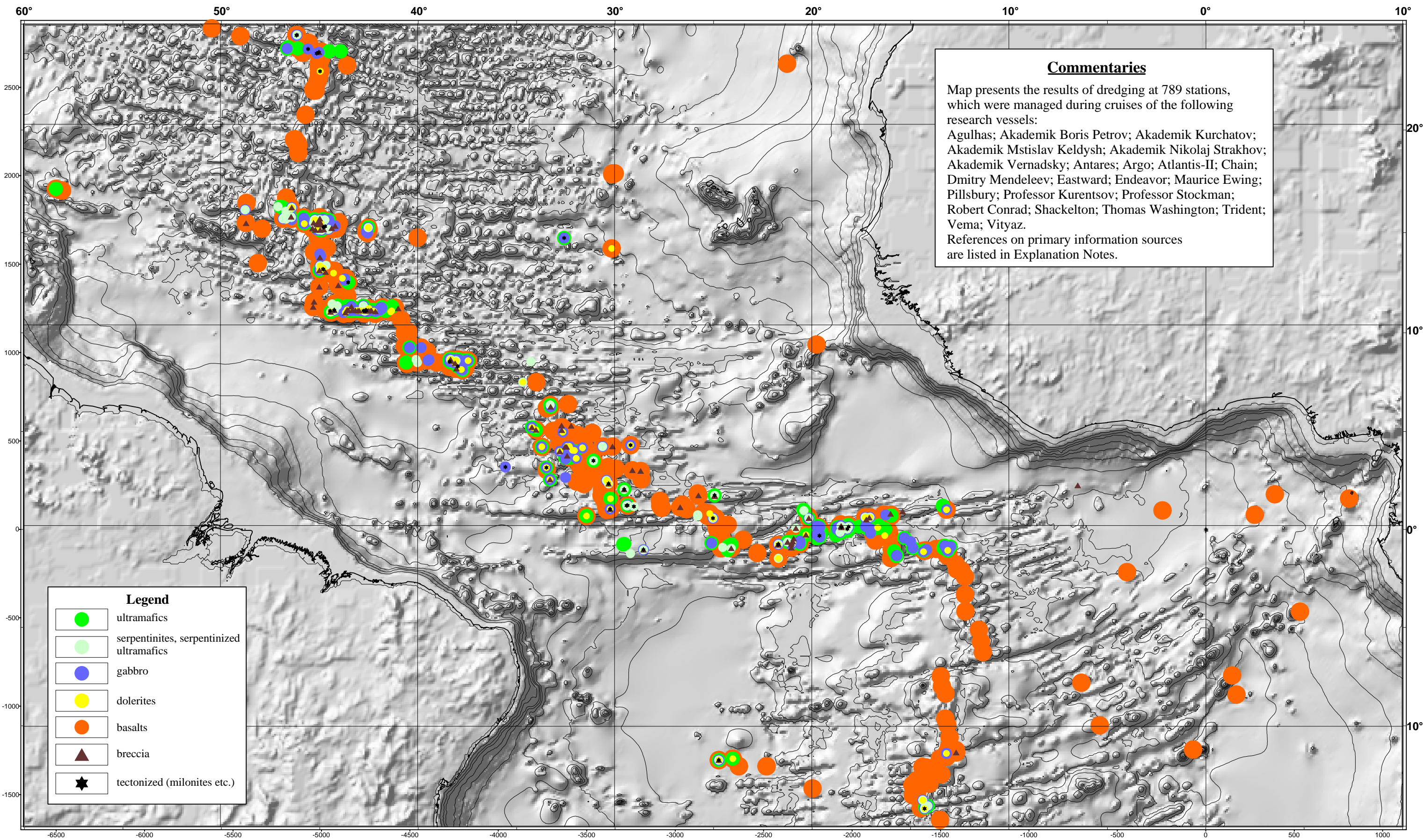


# Basement Rocks of Central Atlantic from Dredge Stations.



**Commentaries**

Map presents the results of dredging at 789 stations, which were managed during cruises of the following research vessels:  
 Agulhas; Akademik Boris Petrov; Akademik Kurchatov; Akademik Mstislav Keldysh; Akademik Nikolaj Strakhov; Akademik Vernadsky; Antares; Argo; Atlantis-II; Chain; Dmitry Mendeleev; Eastward; Endeavor; Maurice Ewing; Pillsbury; Professor Kurentsov; Professor Stockman; Robert Conrad; Shackelton; Thomas Washington; Trident; Vema; Vityaz.  
 References on primary information sources are listed in Explanation Notes.

List 12.

