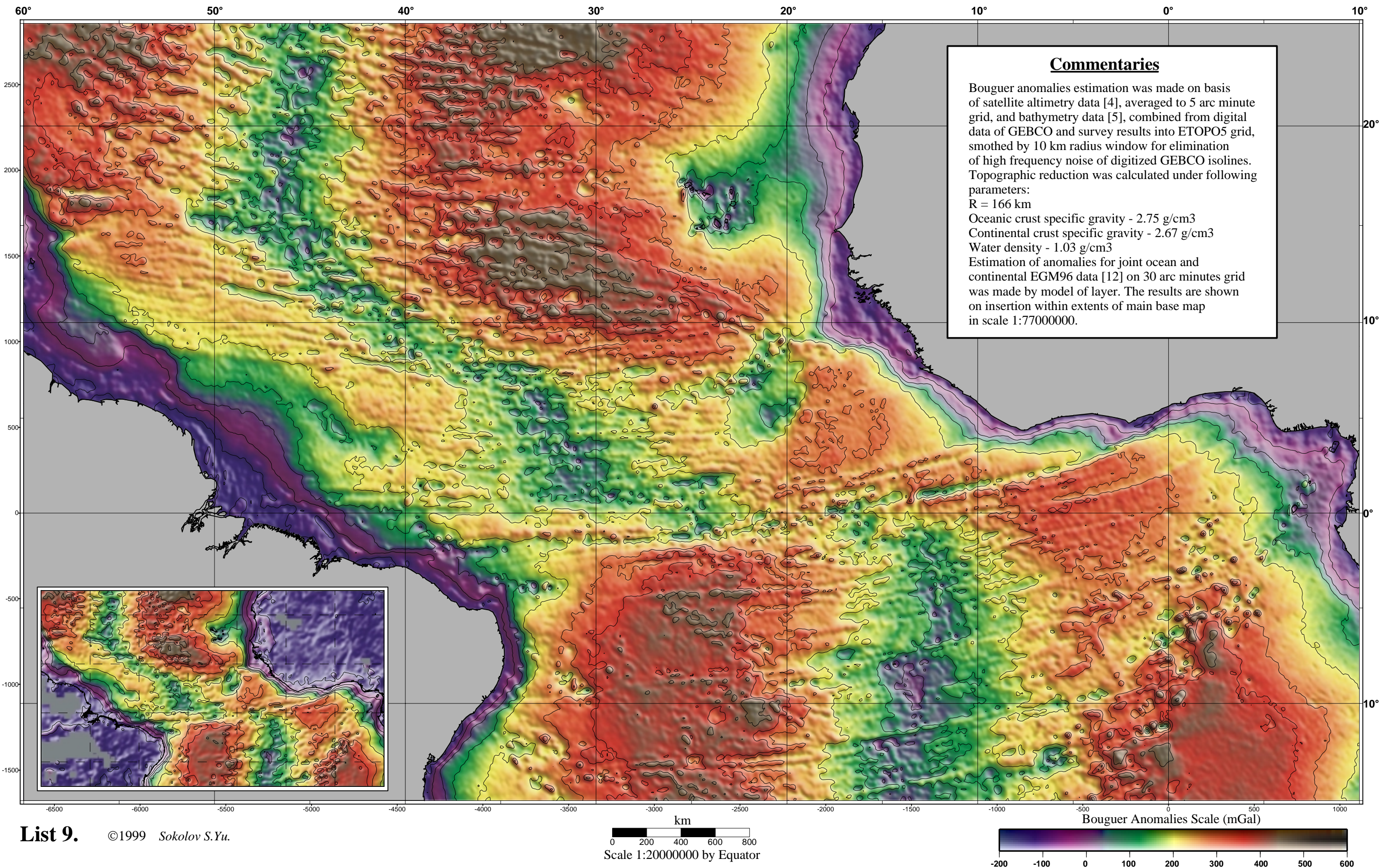


Bouguer Anomalies Calculated from Altimetry and Bathymetry Data on 5'x5' Grid.



Commentaries

Bouguer anomalies estimation was made on basis of satellite altimetry data [4], averaged to 5 arc minute grid, and bathymetry data [5], combined from digital data of GEBCO and survey results into ETOPO5 grid, smoothed by 10 km radius window for elimination of high frequency noise of digitized GEBCO isolines. Topographic reduction was calculated under following parameters:
 R = 166 km
 Oceanic crust specific gravity - 2.75 g/cm³
 Continental crust specific gravity - 2.67 g/cm³
 Water density - 1.03 g/cm³
 Estimation of anomalies for joint ocean and continental EGM96 data [12] on 30 arc minutes grid was made by model of layer. The results are shown on insertion within extents of main base map in scale 1:77000000.