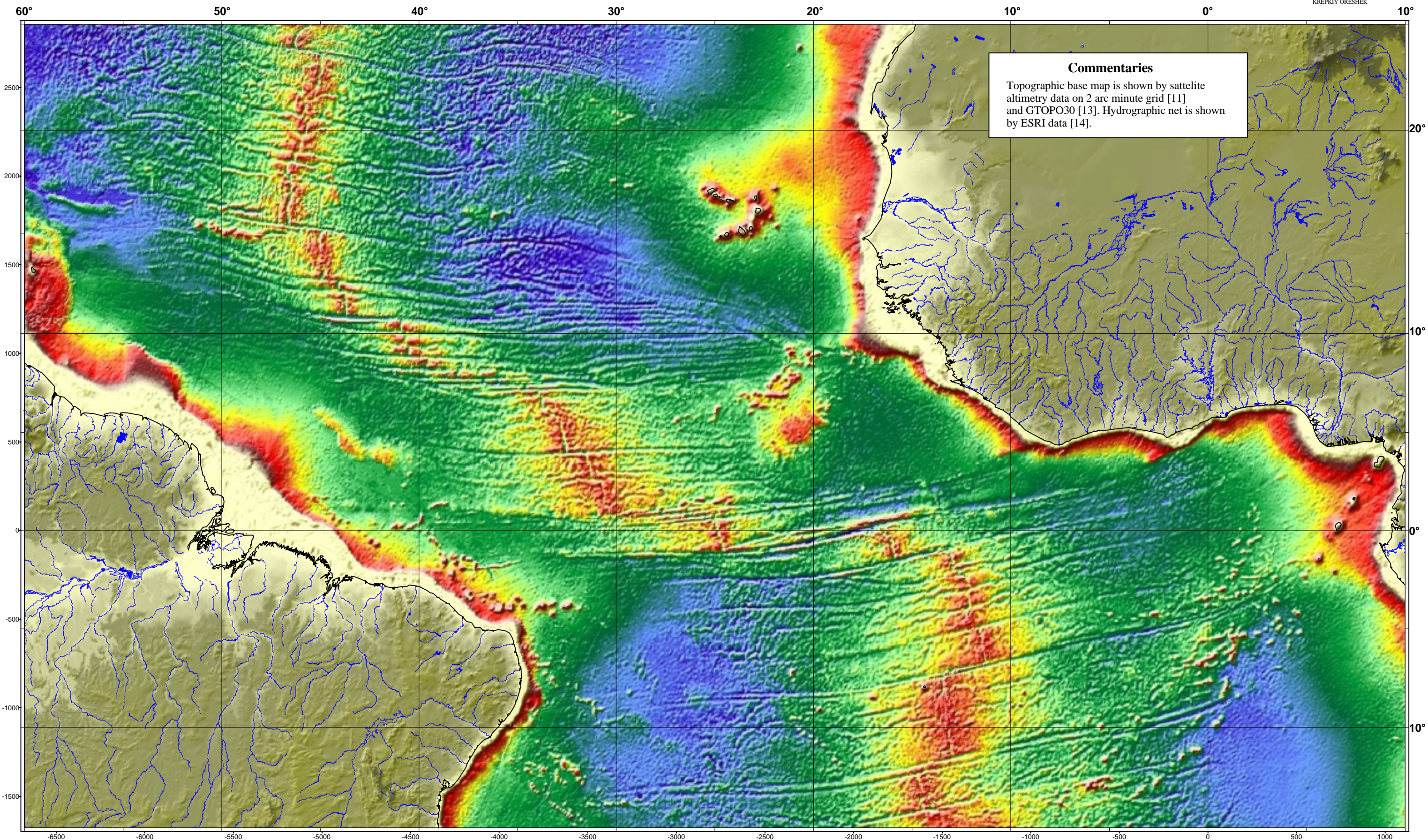


# Bottom Topography of Central Atlantic from Sattelite Altimetry Data and Topography of Adjacent Continents.



**Commentaries**  
Topographic base map is shown by sattelite altimetry data on 2 arc minute grid [11] and GTOPO30 [13]. Hydrographic net is shown by ESRI data [14].

List 3. 1998 Sokolov S.Yu.

