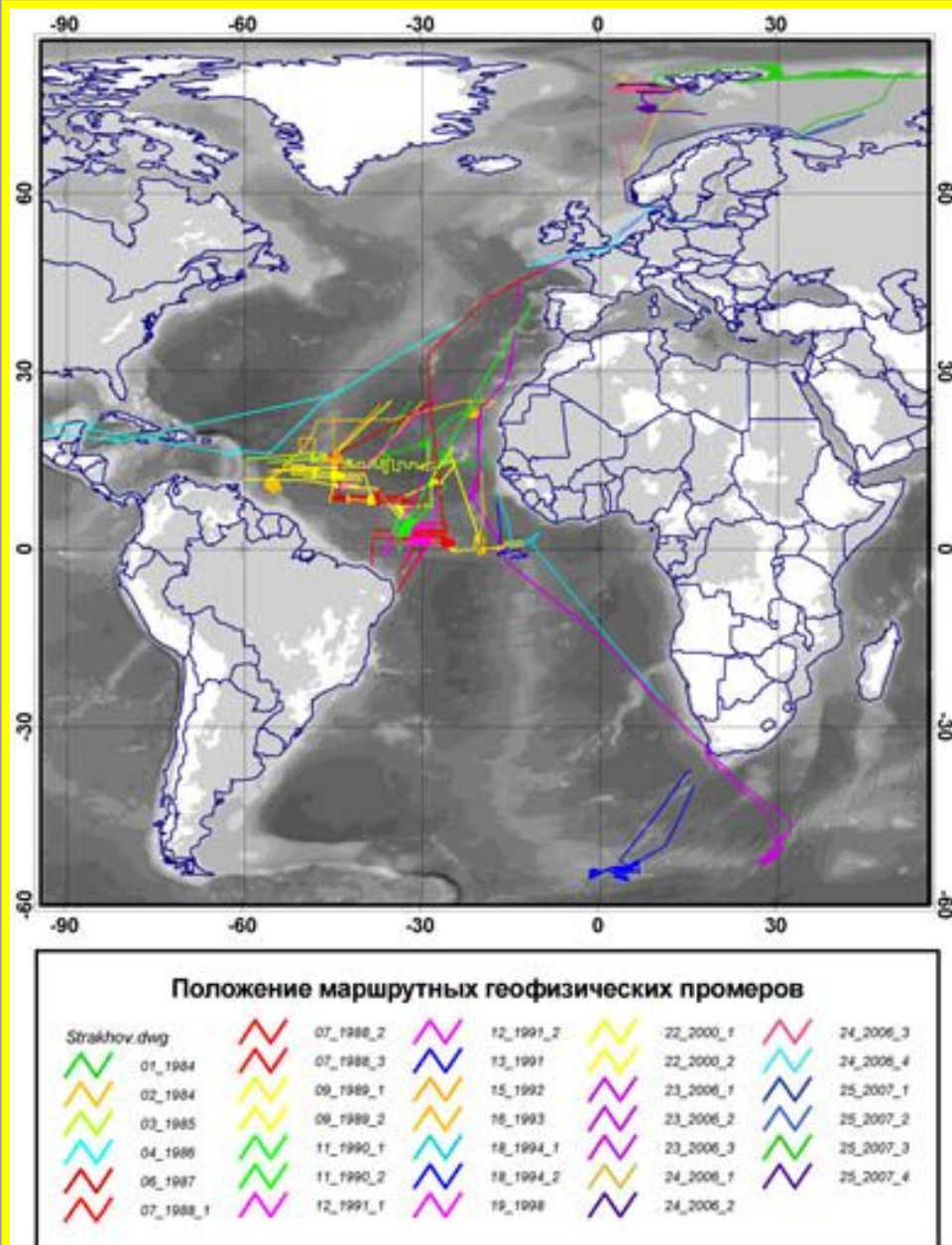


# ***Research Vessel "Akademik Nikolaj Strakhov"***

**Equipment and Laboratories**





- Twenty seven (27) scientific expeditions (international including), were carried out aboard this vessel and a number of commercial projects were realized in the period from 1985 to 2010.



A wide-angle photograph of a calm body of water, likely a lake or sea, under a vast, cloudy sky. The water is a deep blue, with gentle ripples and reflections of the sky. The horizon line is straight and divides the image roughly in half. The sky is filled with soft, white and grey clouds, with a hint of sunlight breaking through near the top right. The overall mood is serene and expansive.

**OUTBOARD WORKS**

# A-FRAME



■ 12 T SWL





# WINCHES



# 0.9 tons winch for seismic streamer (2.5 km and less)





# 10.0 tons winch



# WIRE – 6000 m

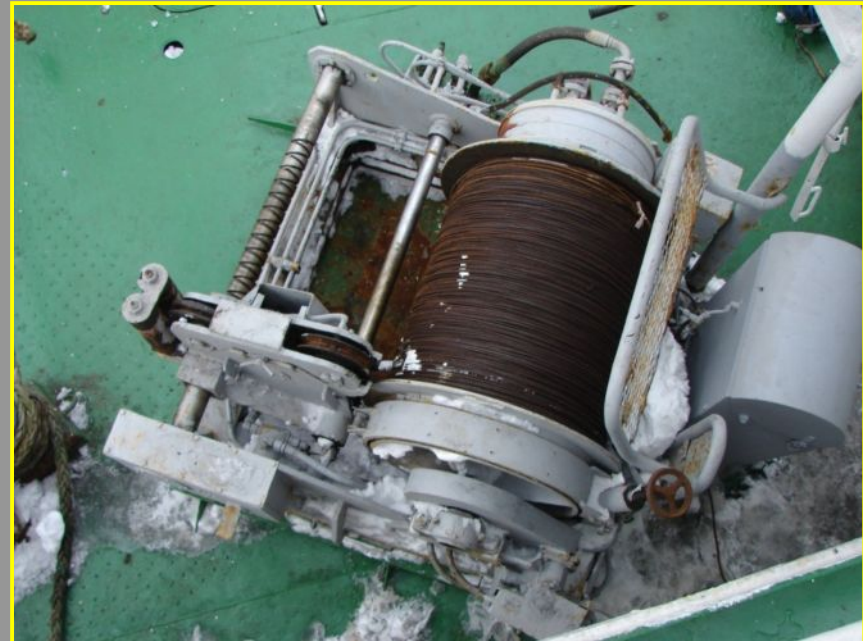




# Warping Drum



# 1,5 tons winch – main deck





# 1,5 tons winch – boat deck









## Compressor and receiver (2)

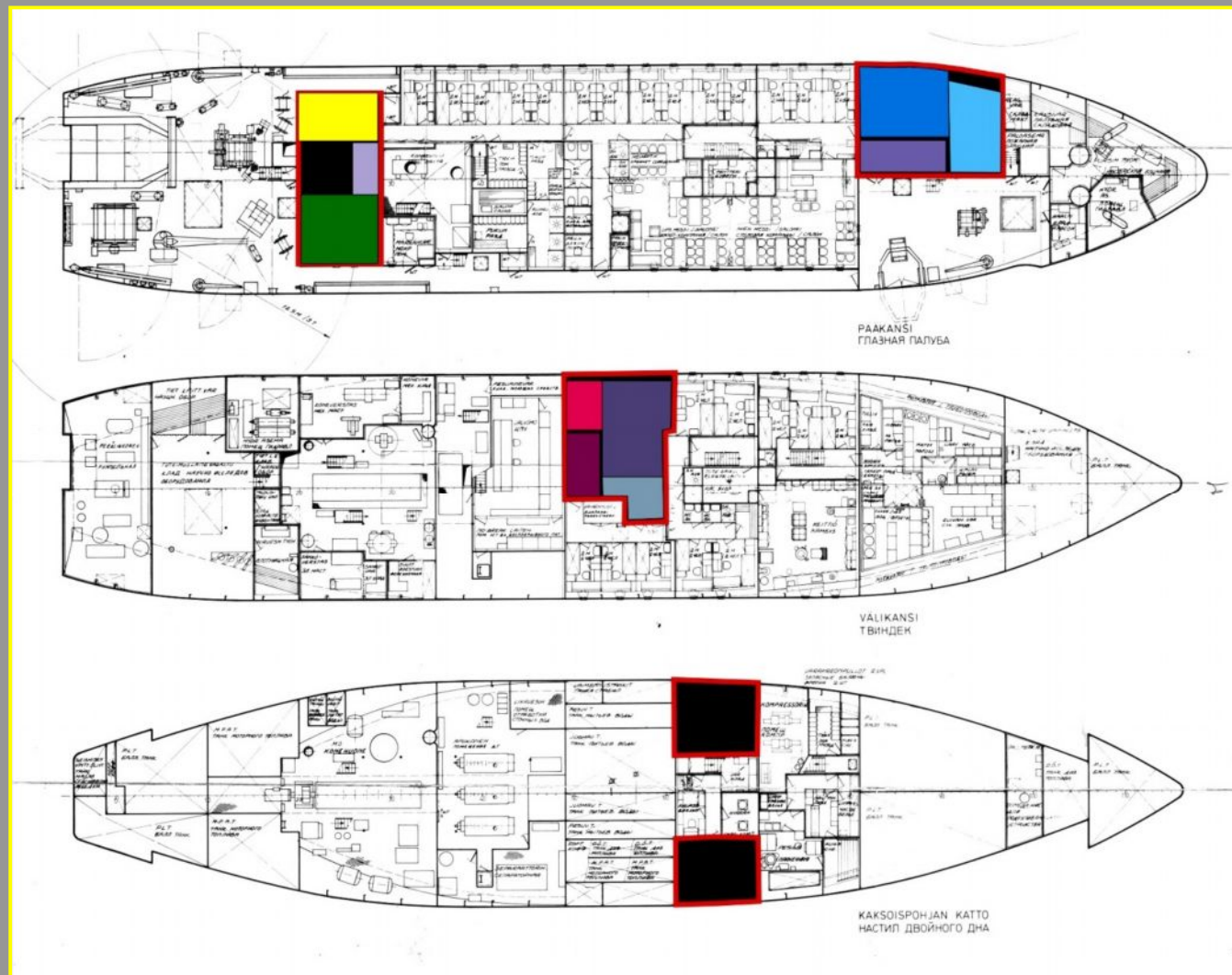






**RESEARCH ROOMS**

# Схема расположения research rooms





# Seismic ship stern Laboratory



# Seismic ship stern Laboratory





# Stern Laboratory



# Foredeck Laboratory





# Foredeck Laboratory



# Foredeck Laboratory in Twindeck





## SeaBat 71 (RESON)



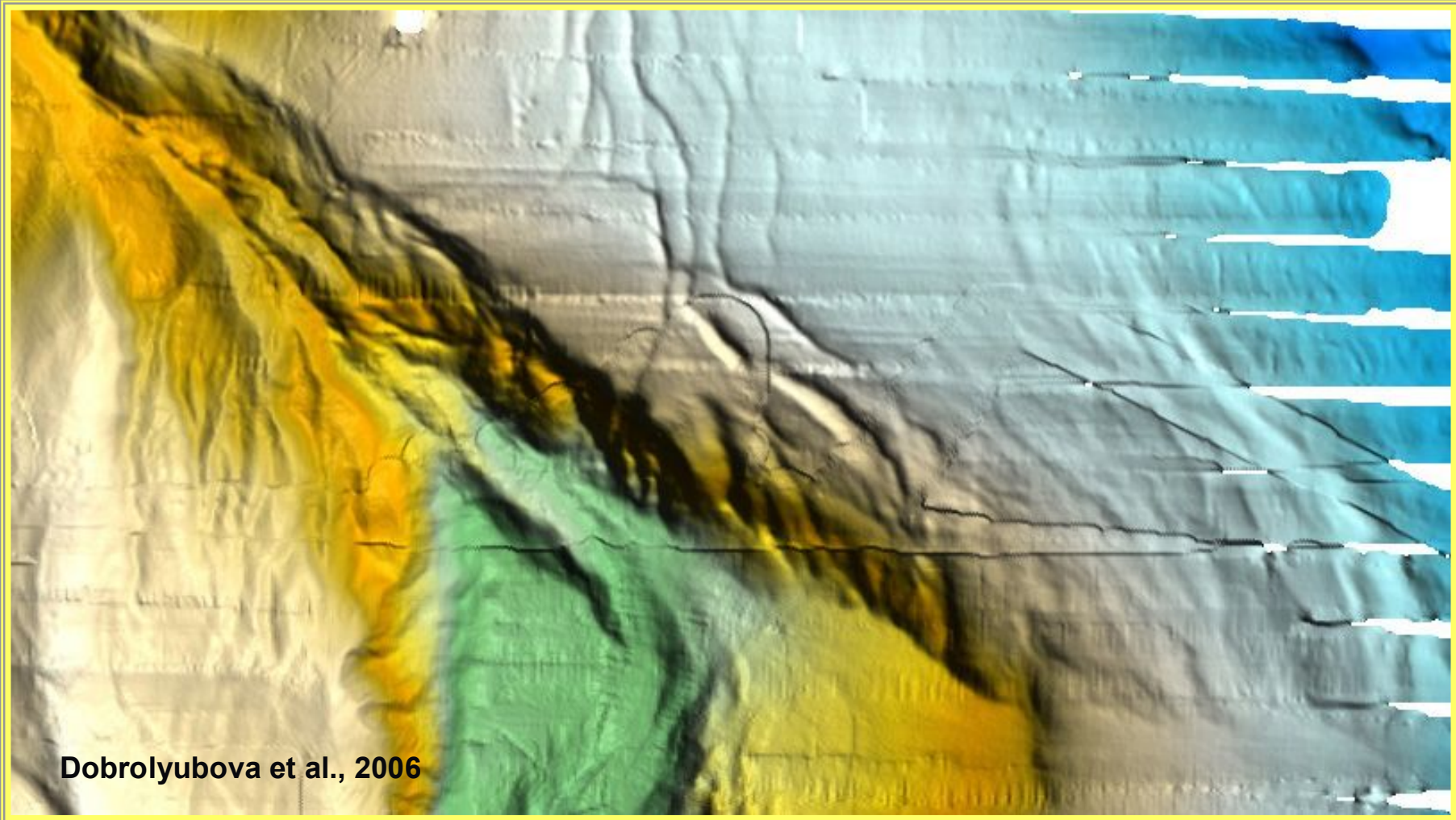




# SVP-30

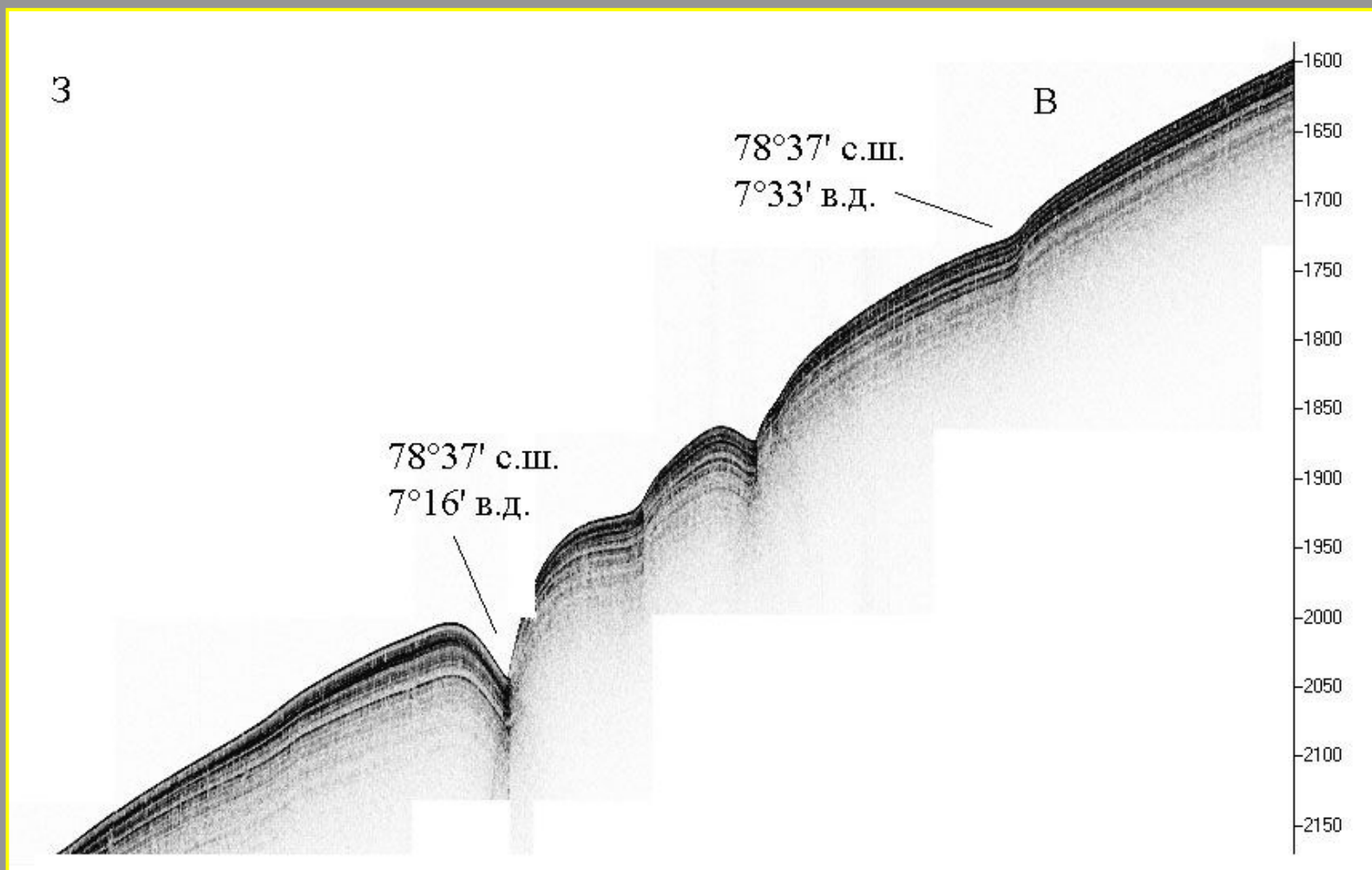


## Molloy Fracture Zone. Greenland Sea





## Neotectonic deformations

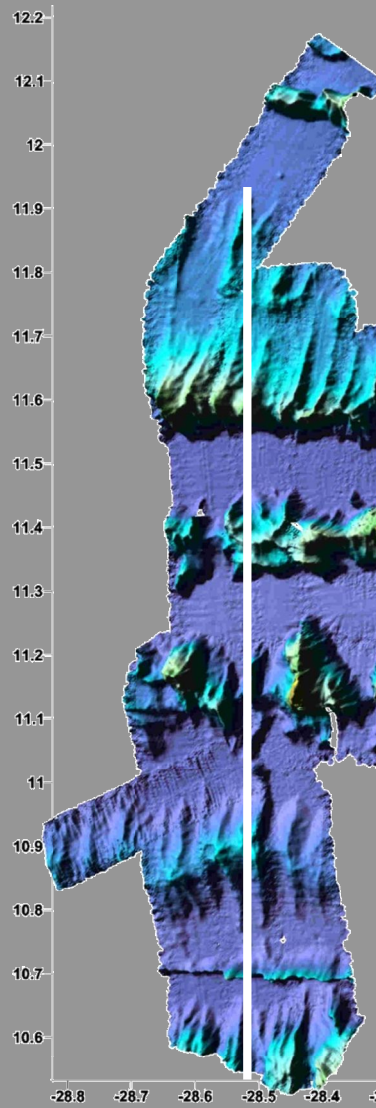


# Single channel profiling

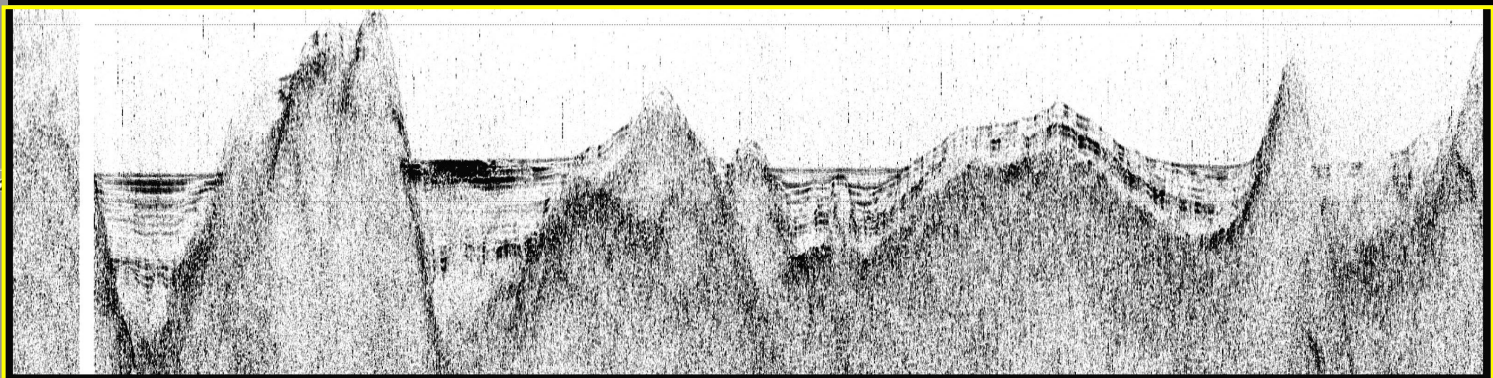




## Cabo Verde Escarpment. Atlantic



*Dobrolyubova, Turko 2000*





# Gravity cores and Drages





# Samples on board



# Heat flow





# COMMUNICATION



- ***Alexander. O. Mazarovich***
- **Deputy Director  
Geological Institute,  
Russian Academy of  
Sciences  
Moscow 119017, Pyzhevsky,  
7  
Tel: 7 (495) 953-0031  
Fax: 7 (495) 951-0443  
E-mail:  
amazarovich@yandex.ru  
mazarovich@ginras.ru**